



FIRE FIGHTING PUMPS

Vertical Turbine



20 YEARS
OF EXCELLENCE
www.lifeco-uk.com

WE AIM TO MAKE THE WORLD A SAFER PLACE



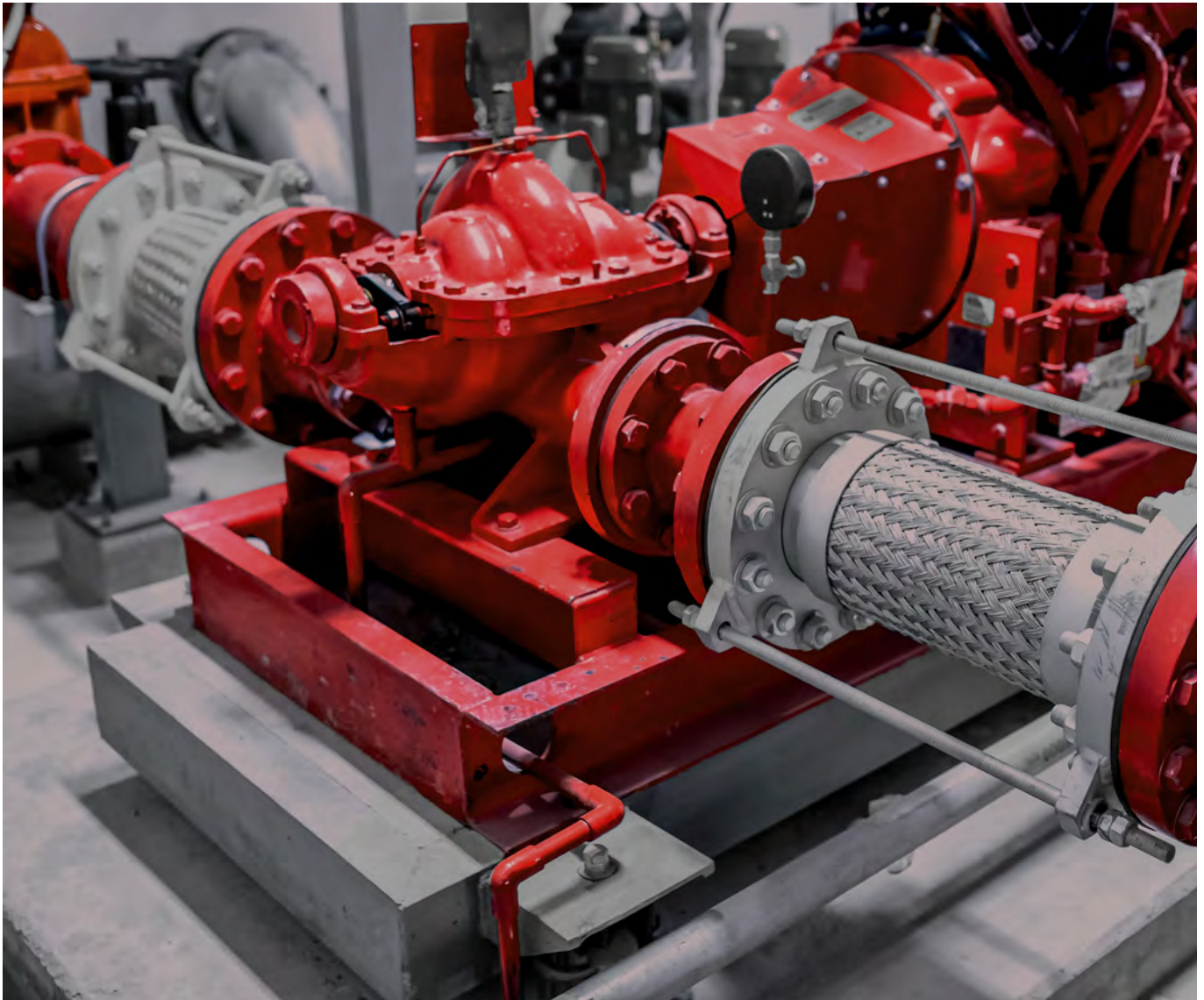
THE CORNER STONE TO BUILDING THE FUTURE

Lichfield Fire & Safety Equipment Co. Ltd. (LIFECO), LIFECO has been a global leader in supplying products covering the full range for fire detection, prevention, extinguishing and suppression system. LIFECO, with its world headquarters located in United Kingdom and is well poised to serve a variety of International markets in addition to fulfilling the local market demand.

LIFECO serves Civil Defence, Industrial and Commercial markets with its wide range of quality and innovative products. LIFECO is represented globally with its well knit National and International infrastructure of distributors. The Company's strengths are underpinned by a highly skilled workforce, and a diverse range of quality products and services that aims to provide a 'one stop shop' to satisfy all of our Customers Fire and Life Safety requirements.



Fire Fighting Pumps



LIFECO pumps undergoes required inspection, tests and production control during the assembly process and records are logged for the same, before being delivered to our customers. Each pump produced, undergoes performance testings as follows:

a) OPERATION TEST

Performance curves are plotted showing the Efficiency, Brake-Horsepower (kW), and Total Head developed at shutoff, at rated capacity, at 150 percent of rated capacity, and at selected intermediate capacities between shutoff and maximum capacities exceeding 150% of rated capacity.

b) HYDROSTATIC TEST

Each pump is tested hydrostatically for not less than 5 minutes. The test pressure is to be upto 2 times the maximum working pressure of the pump, but in no case less than 250 psi (1724 kPa) to ensure no rupture or leakage through the castings at the test pressure.

c) IMPELLER BALANCING

The impellers of each pump are dynamically balanced to the G6.3 balance quality grade in accordance with the requirements for pump impellers in the Standard for Mechanical Vibration – Balance Quality

Vertical Turbine Fire Pump



50/60 HZ



FLOW CAPACITY : 200 GPM - 2000 GPM
 PRESSURE RANGE : 40 - 355 PSI
 MAX WORKING PRESSURE : 290 PSI - 395 PSI
 SPEED : 1480,1760, 2900, 2980, 3000 RPM

- Dynamically Balanced Impeller
- Constructed in variety of metallurgies
- Available in 50 Hz and 60 Hz
- Drivers with gear boxes at electrical & diesel speed
- Designed for easy maintenance
- Open line shaft
- Packaged systems available
- Self-Venting Design eliminates vapor lock
- Efficiently Designed Shaft
- Heavy wall thickness
- Sealing arrangement is packing design
- Modular Construction
- Space-saver design

Model Dsg	Rated Capacity (GPM)	Rated Net Pressure Range (PSI)	Approx Speed (RPM)
LFP - 200- 70VT	200	40-289	1480
LFP - 200- 70VT		48-348	1760
LFP - 200- 30VT		60-305	2900
LFP - 200- 30VT		63-323	2980
LFP - 200- 30VT		64-327	3000
LFP - 750- 70- VT	250	40 - 248	1480
LFP - 250- 70VT		40-290	1480
LFP - 250- 70VT		48-345	1760
LFP - 250- 30VT		60-299	2900
LFP - 250- 30VT		63-317	2980
LFP - 250- 30VT	64-321	3000	
LFP - 750- 70- VT	300	40 - 248	1480
LFP - 750- 70- VT		48 - 351	1760
LFP - 300- 70VT		40-290	1480
LFP - 300- 70VT		47-341	1760
LFP - 300- 30VT		58-295	2900
LFP - 300- 30VT	61-312	2980	
LFP - 300- 30VT	62-316	3000	
LFP - 750- 70- VT	400	40 - 247	1480
LFP - 750- 70- VT		48 - 351	1760
LFP - 400- 70VT		40-283	1480
LFP - 400- 70VT		46-336	1760
LFP - 400- 30VT		54-285	2900
LFP - 400- 30VT	57-302	2980	
LFP - 400- 30VT	58-306	3000	
LFP - 750- 70- VT	450	40 - 244	1480
LFP - 750- 70- VT		46 - 349	1760
LFP - 450- 70VT		40-279	1480
LFP - 450- 70VT		45-333	1760
LFP - 450- 30VT		52-279	2900
LFP - 450- 30VT	56-296	2980	
LFP - 450- 30VT	56-300	3000	
LFP - 750- 70- VT	500	40 - 241	1480
LFP - 750- 70- VT		44 - 347	1760
LFP - 500- 70VT		40-276	1480
LFP - 500- 70VT		44-331	1760
LFP - 500- 30VT		49-273	2900
LFP - 500- 30VT	53-290	2980	
LFP - 500- 30VT	54-294	3000	
LFP - 750- 70- VT	750	40 - 236	1480
LFP - 750- 70- VT		44 - 343	1760
LFP - 750- 70- VT		40 - 320	1760
LFP - 1500- 80- VT		42 - 254	1480
LFP - 750- 70VT		40-253	1480
LFP - 750- 70VT	40-309	1760	
LFP - 750- 80VT	43-306	1480	
LFP - 750- 80VT	62-359	1760	
LFP - 750- 30VT	72-79	2900	
LFP - 750- 30VT	108-119	2900	
LFP - 750- 30VT	144-159	2900	
LFP - 750- 30VT	180-198	2900	
LFP - 750- 30VT	216-238	2900	
LFP - 750- 30VT	150-166	2950	
LFP - 750- 30VT	187-207	2950	
LFP - 750- 30VT	225-249	2950	
LFP - 750- 30VT	83-87	3000	
LFP - 750- 30VT	117-130	3000	

Wide Range of Flows and Pressures Available in ELECTRIC MOTOR and DIESEL ENGINE Driven Configuration Suitable for Commercial, Industrial and Buildings Applications.

Model Dsg	Rated Capacity (GPM)	Rated Net Pressure Range (PSI)	Approx Speed (RPM)	
LFP - 1000- 70VT	1000	56	1480	
LFP - 1000- 70VT		73	1480	
LFP - 1000- 70VT		88	1480	
LFP - 1000- 70VT		112	1480	
LFP - 1000- 70VT		131	1480	
LFP - 1000- 70VT		145	1480	
LFP - 1000- 70VT		160	1480	
LFP - 1000- 70VT		187	1480	
LFP - 1000- 70VT		203	1480	
LFP - 1000- 70VT		218	1480	
LFP - 1000- 70VT		102	1450	
LFP - 1000- 70VT		117	1450	
LFP - 1000- 70VT		174	1450	
LFP - 1000- 70VT		189	1450	
LFP - 1000- 70VT		57	1760	
LFP - 1000- 70VT		80	1760	
LFP - 1000- 70VT		106	1760	
LFP - 1000- 70VT		133	1760	
LFP - 1000- 70VT		160	1760	
LFP - 1000- 70VT		189	1760	
LFP - 1000- 70VT		218	1760	
LFP - 1000- 70VT		247	1760	
LFP - 1000- 70VT		276	1760	
LFP - 1000- 70VT		58	1780	
LFP - 1000- 70VT		87	1780	
LFP - 1000- 70VT		116	1780	
LFP - 1000- 70VT		145	1780	
LFP - 1000- 70VT		175	1780	
LFP - 1000- 70VT		204	1780	
LFP - 1000- 70VT		233	1780	
LFP - 1000- 70VT		262	1780	
LFP - 1000- 70VT		291	1780	
LFP - 1000- 80VT			40-287	1480
LFP - 1000- 80VT			59-343	1760
LFP - 1000- 90VT			57-328	1480
LFP - 1000- 90VT			85-337	1760
LFP - 1500- 80- VT			40 - 244	1480
LFP - 1500- 80- VT			58 - 355	1760
LFP - 2000- 90- VT			58 - 239	1480
LFP - 1250- 80VT		1250	40-273	1480
LFP - 1250- 80VT			54-330	1760
LFP - 1250- 90VT			55-317	1480
LFP - 1250- 90VT			80-329	1760
LFP - 1500- 80- VT			40 - 225	1480
LFP - 1500- 80- VT			54 - 341	1760
LFP - 2000- 90- VT			56 - 230	1480
LFP - 2000- 90- VT			80 - 335	1760
LFP - 1500- 80VT		1500	84-254	1480
LFP - 1500- 80VT	60-76		1480	
LFP - 1500- 80VT	49-312		1760	
LFP - 1500- 90VT	52-309		1480	
LFP - 1500- 90VT	78-314		1760	
LFP - 1500- 80- VT	58 - 317		1760	
LFP - 2000- 90- VT	52 - 225		1480	
LFP - 2000- 90- VT	78 - 325		1760	
LFP - 2000- 90- VT	2000	72 - 312	1760	
LFP - 2000- 90VT		71-82	1480	
LFP - 2000- 90VT		100-123	1480	
LFP - 2000- 90VT		133-165	1480	
LFP - 2000- 90VT		167-288	1480	
LFP - 2000- 90VT		96-118	1450	
LFP - 2000- 90VT		128-157	1450	
LFP - 2000- 90VT		72-302	1760	

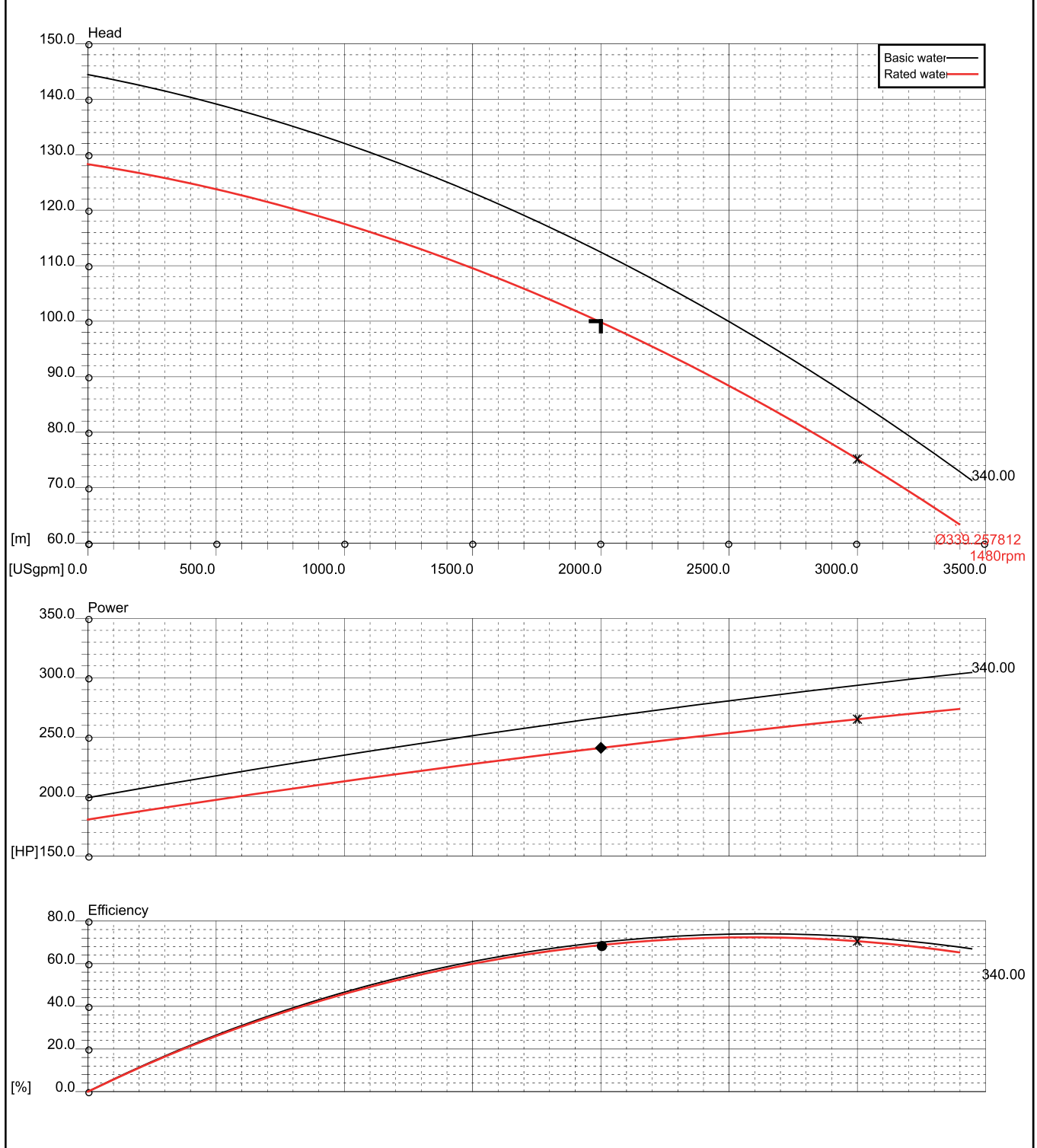
Notes

1. All Pumps are Hydrostatically Tested to minimum of 150 % of its Maximum Working Pressure and can with stand Double the Max. Working Pressure.
2. All Pumps have Clock-Wise Rotation when viewed from the Driver Side.
3. All Pumps are horizontal single stage Pumps.
4. "The rated speed marked on the pump can vary within +/-4% of the listed/ approved rated speed example : 3000 RPM pump can be driven with 2900 RPM Drivers."

Sample Fire Pump Performance Curves

Vertical Turbine Fire Pump
PUMP MODEL: LFP 2000-90 VT

General data					
Impeller type Closed	Selected Ø 339.257812 [mm]	Max. diameter 340.00 [mm]	Min. diameter 330.00 [mm]	Speed 1480 [rpm]	Stages number 4
Operating data					
Duty flow 2000.0 [USgpm]	Dutymanometrichead 100.0 [m]	Efficiency 68.7 [%]	Power on shaft 241.0 [HP]	NS 2854 [US]	
Density 1.000 [kg/dm³]	Kinematic viscosity 1.0 [cSt]	Viscosity coeff. Cq 1.00	Viscosity coeff. Ch 1.00	Viscosity coeff. Cη 1.00	Fluid Water



**LIFECO reserves the right, at its discretion, to change, modify, add or remove details/content at any time without prior notice.



LICHFIELD FIRE & SAFETY EQUIPMENT CO.LTD.

Unit 8, Calibre Industrial Park, Laches Close, Four Ashes,
Wolverhampton, WV10 7DZ, United Kingdom
T +44 1902 798 706 F +44 1902 798 679 E sales@lifeco-uk.com
www.lifeco-uk.com

