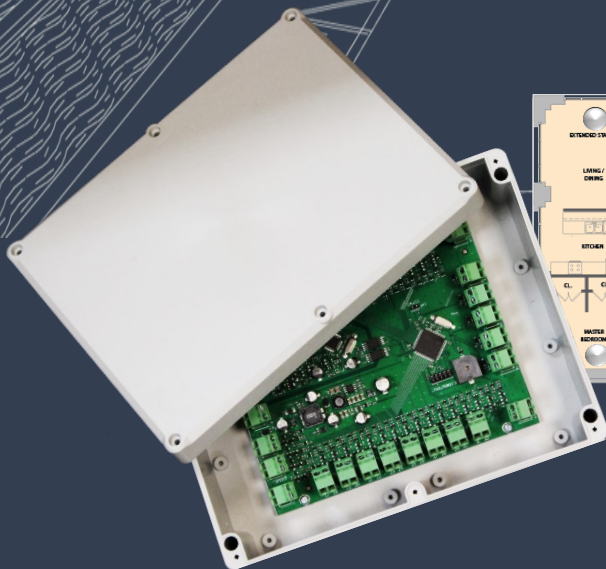


SensoIRIS MIMIC

Addressable Module with 32 Outputs for LED control



SensoIRIS MIMIC

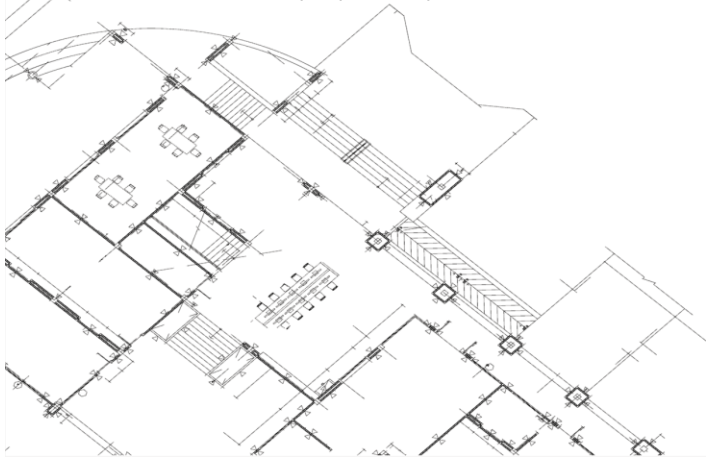


The SensoIRIS MIMIC is an addressable module, specially designed for connection to mimic/repeater panels presenting a geographical plan of the fire alarm system. The module is capable to control up to 32 LED outputs for indication of different events in the fire system, and is provided also with special LED outputs for repeating a FIRE Alarm, Fault and Disablement events directly from the fire alarm control panel. The module has a built-in isolator module which when used allows continuous operation of the loop in case of module's failure and without need of using additional isolator modules. The module is delivered mounted into a plastic box suitable for wall mounting with IP43 rating. It is recommended to use it only for indoor installations. The SensoIRIS MIMIC module can be mounted also directly into the installation box of the mimic/repeater panel.

Intelligent analogue addressable fire alarm mimic/synoptic module with built-in isolator module

FEATURES

- 32 Outputs for LED control;
- Two operation modes for LED outputs control:
 - common-anode or common-cathode
 - programmable via jumper on the PCB;
- Built-in compensating resistors;
- Built-in isolator module;
- Easy for operation pluggable connectors for quick wire installation on the site, included into the supplied equipment;
- Special inputs for LED operation Test, Silence alarm and Reset of the Fire panel, Silence of the module's busser;
- Special LED Outputs for repeating the FIRE, Fault and Disablement indication of the fire panel;
- Separate LED Output for indication of the power supply status of the connected Mimic panel;
- Enclosure box for wall mounting, IP43



TECHNICAL SPECIFICATIONS

EN 54-18
EN 54-17

Loop Characteristics:	
• Operating voltage	16 ÷ 32VDC
• Max. current consumption	<2mA @27VDC
Current consumption with PCB Status LED ON*	5.4mA
Outputs Characteristics	
• Operating Voltage	12÷24VDC
• Voltage for LEDs	12VDC
• Max current consumption	390mA@ 24VDC / 790mA@ 12VDC
Automatic current limitation of the outputs:	
• With Ri=0k	15mA
• With Ri=1k	10mA
Max. length of connection cable for LEDs	3m
Material/color (enclosure box)	ABS, Grey

COMPATIBLE PRODUCT RANGE

- SIMPO – addressable Fire Alarm panel (Software version 4.3.x or higher)
- IRIS/IRIS PRO– addressable Fire Alarm panels (Software version 6.3.x or higher)
- iRIS8 - addressable Fire Alarm panels (Software version 1.0.x or higher)
- SensoIRIS Programmer – address programming tool
- PS2410 – External Power Supply Unit, 24VDC
- Third party Mimic/Synoptic Panels and Repeater Panels for floor plan geographic visualization of the fire alarm system



The maximal number of used SensoIRIS MIMIC modules per system configuration, depends on the type of the fire alarm control panel:

- SIMPO - up to 5,
- IRIS/IRIS PRO - up to 10,
- iRIS 8 - up to 50!

